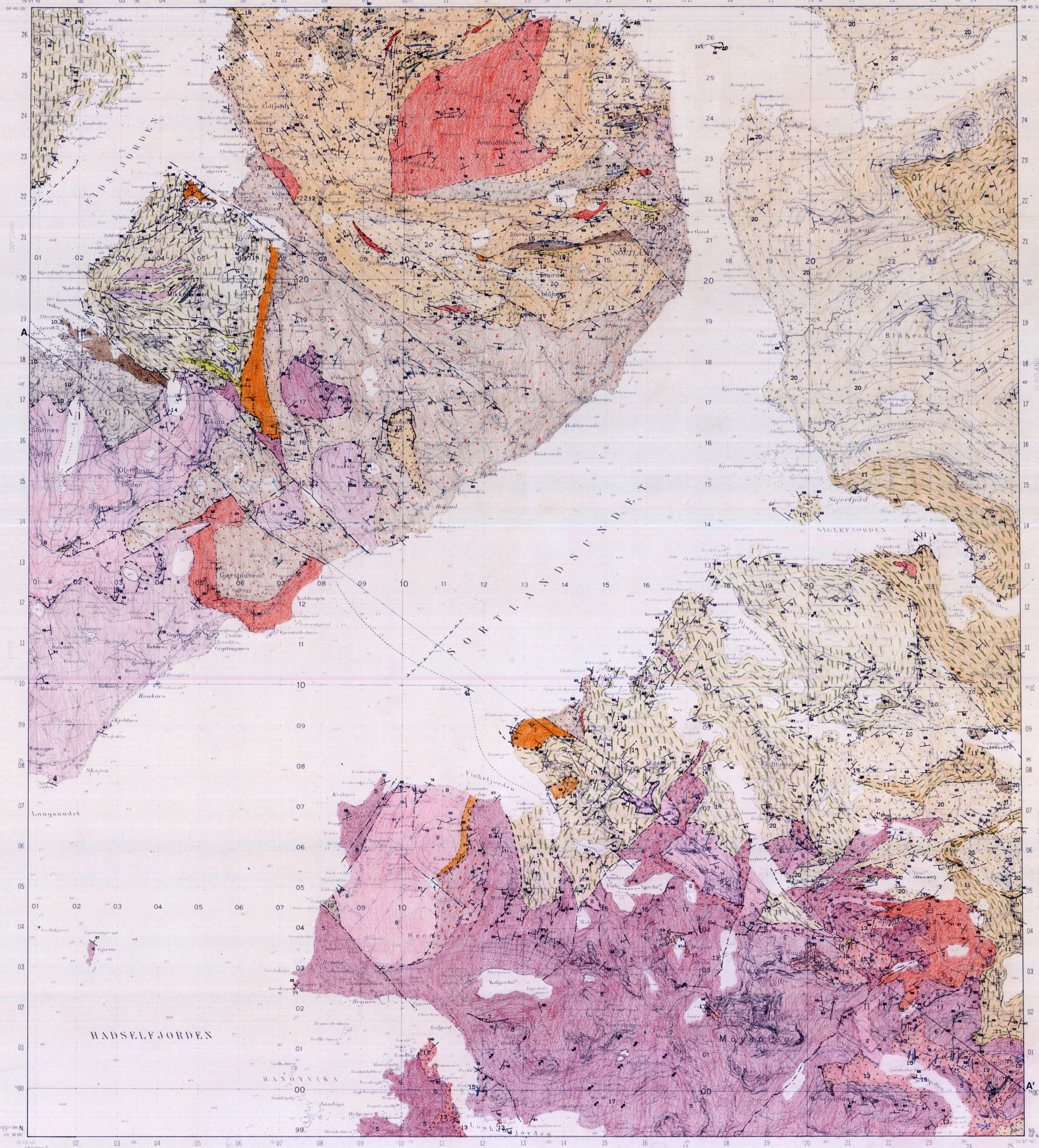


SORTLAND

NORGES GEOLOGISKE UNDERSØKELSE

1232 III

FORELØPIG BERGRUNNSKART 1:50000



TEGNFORKLARING Legend

OMVANDLINGSBERGARTER AV UKJENT ALDER

Altered rocks of unknown age
BERGARTER MED OMVANDLET FELTSPAT OG TETT OPPSPREKKING
Rocks with altered feldspar and close spaced jointing



STØRKNINGSBERGART AV UKJENT ALDER

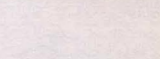
Intrusive rock of unknown age



GRANITT, RØD, VARIABEL KORNSTØRRELSE
Granite, red, inhomogeneous texture

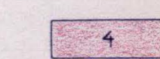


BASISK GANGBERGART UTEN OMVANDLING
Basic dike rock, unmetamorphosed



STØRKNINGSBERGARTER AV PROTEROZOISK ALDER

Igneous rocks of Proterozoic age



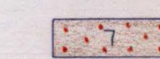
RETROGRADERT MANGERITT, RØD FARGE OG FOLIERT MIDDELSKORNET TEKSTUR
Retrograde mangerite, red colour and intermediate grain size, foliated texture.



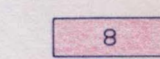
MANGERITT, RAFTSLUNDTYPE
Mangerite, Raftslund type



MANGERITT MED MANGE INNESLUTNINGER
Mangerite, loaded with xenolites



DIORITT OG JOTUNITT
Diorite and Jotunite



CHARNOCKITT OG SYENITT, GROVKORNET OG GRÅ,
OFTE SOM ØYEGNEIS ELLER FINKORNET ROSA DEFORMASJONSPRODUKT
Charnockite and syenite, coarse grained and gray,
partly augen gneiss and a fine grained pink high strain product



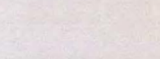
GABBRO MED ENKELTE GNEISINNESLUTNINGER
Gabbro with scattered xenolites of gneiss



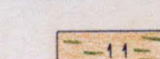
ANORTOSITT, GRÅ FARGE OG GROVKORNET TEKSTUR I UDEFORMERTE PARTIER
Anorthosite, gray colour and coarse grained texture in undeformed portions

OVERFLATEBERGARTER, OMDANNET I TIDLIG PROTEROZOISK TID

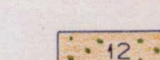
Supracrustal rocks, metamorphosed in early Proterozoic



BÅNDET MIGMATITTISK GNEIS, AMPHIBOLITT-FACIES MINERALSELSKAP
Banded migmatite gneiss, amphibolite facies paragenesis



BÅNDET MIGMATITTISK GNEIS, DELS GRANULITTFACIES MINERALSELSKAP
Banded migmatite gneiss, partly granulite facies metamorphism



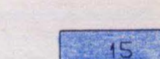
FELTSPATISK GNEIS MED INTERMEDIER SAMMENSETNING OG GRANOBLASTISK TEKSTUR
Felspathic gneiss of intermediate composition and granoblastic texture



AMPHIBOLITT, TILDELS PYROXENEGNEIS, FIN TIL MIDDELS KORNSTØRRELSE
Amphibolite, and Pyroxene gneiss, intermediate to fine grain size



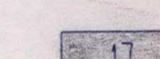
KALKSPATHMARMOR, BÅNDET MED MAGNESIUMSILIKATER
Calcite marble, banded with magnesian silicates



GRAFITTSKIFER
Graphite schist



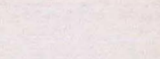
JERNMALM
Iron ore



KVARTSITT
Quartzite

GNEISBERGARTER AV ARKEISK ALDER, TROLIG OMDANNET I PROTEROZOICUM

Gneisses of Archean age, possibly Metamorphosed in Proterozoic



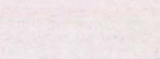
MONZONITISK GRANULITGNEIS MED MØRKE INNESLUTNINGER
Monzonitic granulite gneiss with dark inclusions



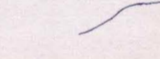
MONZONITISK BIOTITGNEIS MED MØRKE INNESLUTNINGER
Monzonitic biotite gneiss with dark inclusions

GEOLOGISKE GRENSER OG STRUKTURTEGN

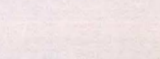
Symbols for rock borders and structures



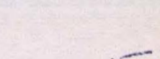
BERGARTSGRENSSE BLOTTET
Rock border exposed



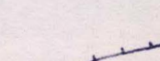
BERGARTSGRENSSE TOLKET
Rock border inferred



BRUDDSONE MED MULIG FORLENGELSE
Fracture zone, tentatively extended



NORMALFORKASTNING, MULIG FORLENGELSE STIPLET
Low angle normal fault
Inferred extension: dashed line



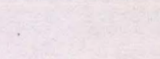
STRØK OG FALL AV BÅNDING OG FOLIASJON, FALL ANGITT
Strike and dip of banding and foliation, dip indicated



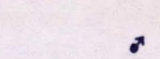
STRØK OG STUPNING AV LINEASJON OG FOLDEAKSER, STUPNING ANGITT
Strike and plunge of lineation and foliation, plunge indicated

SYMBOLER FOR BERGVERK OG FOREKOMSTER

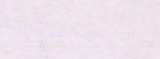
Symbols for mining, quarrying and occurrences



FOREKOMST AV JERNERTS I REGISTRERT SKJERP
Occurrence of iron ore in a filed claim



GRAFITTFØREKOMST
Graphite occurrence



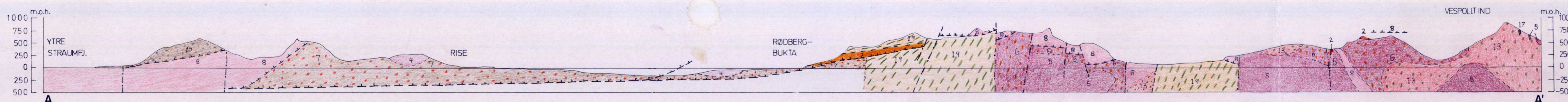
STEINBRUDD FOR PUKK OG KNUST STEIN
Quarry for crushed rock aggregates

Kartlagt av J.Hacklén, K.S.Helen, K.L.Olsen, E.Tveten, V.L.Groffan, T.C.Devanaraj, Sammenstilt 1989 av Einar Tveten.

Referanse til kartet: Tveten, E. 1990 SORTLAND 1232 III, Foreløpig berggrunnskart Norges geologiske undersøkelse

Kartet er ikke gjennomgått av NGUs kartredaksjon

NGU geol. avd.		
KARTARKIVET		
Original nr. 068/90.000	1232	1232
Art Foreløpig berggrunnskart	II	II
Levert den		
Av Tveten, E.		
Godkjent av		



1132	1232	1232
I	IV	I
1132	1232	1232
II	III	II
1131	1231	1231
I	IV	I