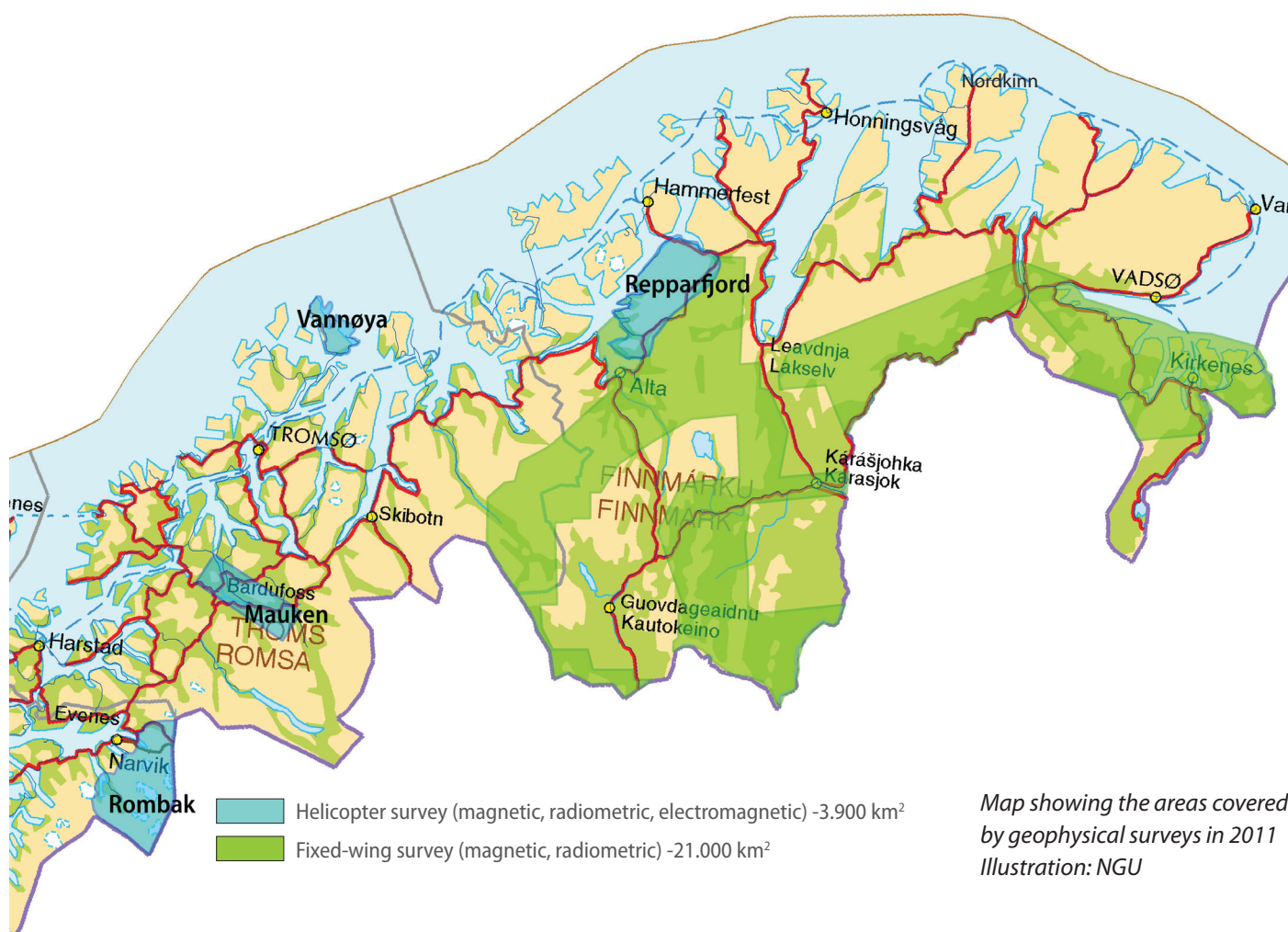




## MINN – Mineral resources In North Norway



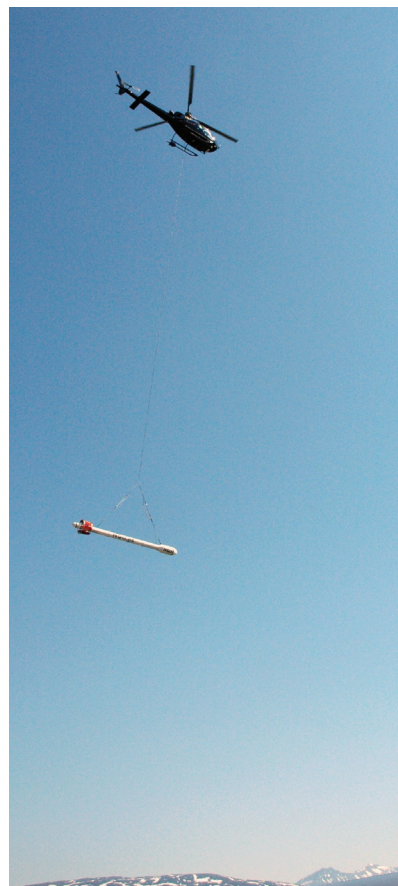
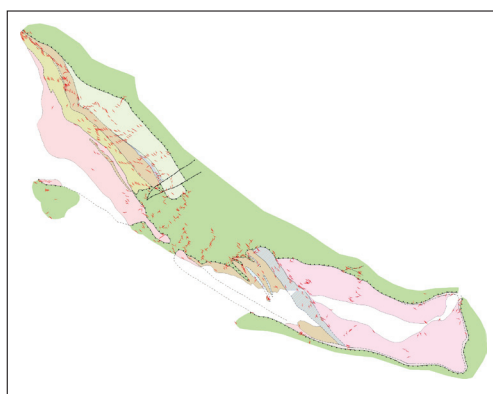
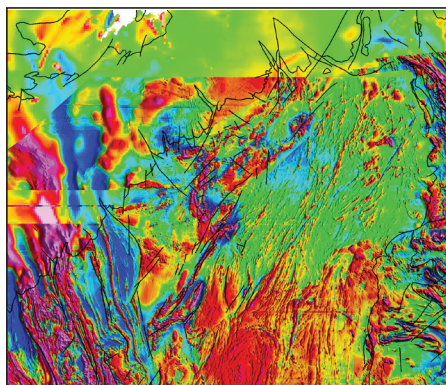
The Norwegian Government has allocated additional funds of NOK 25 mill/ year for the period 2011-2014 to the Geological Survey of Norway (NGU) and the programme Mineral resources in North Norway (MINN) to improve coverage of basic geological information relevant to assessment of the mineral potential in the three northernmost counties.

The programme includes improved coverage of high-resolution geophysical data (magnetic, electromagnetic and radiometric) and ground follow-up in N Norway. Ca. 3.900 km<sup>2</sup> was covered in 2011 by helicopter-borne geophysics; Rombak, Vannøya, Mauken, and Repparfjord. Additionally, large areas in inner Finnmark were covered

by fixed-wing surveys. Processed data are released free of charge on the NGU website as they become available.

The results of geochemical re-analyses of 2.200 till samples from the whole of northern Norway initiated a follow-up sampling programme on Nordkinn Peninsula – an area with anomalous values of REE and various other special metals. Around 800 samples were collected in an area of 1.600 km<sup>2</sup> last year.

Geological investigations are being carried out in key metallogenic areas with high potential for orogenic gold, sedimentary copper and iron, magmatic nickel-copper-PGE and iron-titanium-vanadium.



## NORWEGIAN GOVERNMENT POLICY:

### • New mineral act came into force on 1st January 2010

Easier applications, larger areas, lower fees for the first years.

### • National mineral strategy under development

The government is working on a national mineral strategy to be ready in the first half of 2012.

### • Additional funding to the Geological Survey of Norway - MINN

Increased coverage of regional geophysical data and ground follow-up in N Norway.

### • Climate and Pollution Agency

New guidelines for marine disposal of mine waste - more predictable framework.

### • Research Council of Norway

A new strategy for mineral resource research covering the whole value chain is being prepared. The first year of funding will be 2013.

### • Nordic cooperation

Initiatives towards establishment of a cooperative mineral research network in the Nordic region have strong political backing.

## MINN

Mineral resources In North Norway

### In brief:

- NOK 25 mill./year (>4 mill. USD/year)
- High-resolution geophysics
- Follow-up geology
- Till geochemistry
- Spin-off projects (universities, NRC, industry)

### Goals:

- Higher exploration activity
- New discoveries
- Improved geological knowledge-base
- Mineral potential evaluation
- Improved areal planning



## NGU

P.O.Box 6315 Sluppen  
N-7491 Trondheim  
Norway

### Visiting address:

Leiv Eirikssons veg 39  
tlf: +47 73 90 40 00  
ngu@ngu.no

### CONTACT AT NGU:

Jan Sverre Sandstad  
jan.sandstad@ngu.no  
tel: +47 73 90 42 08  
cell: +47 99 09 17 46

[www.ngu.no](http://www.ngu.no)

**The results from the MINN-programme can be downloaded from:**

<http://www.ngu.no/no/tm/Om-NGU/Prosjekter/Mineralressurser-i-Nord-Norge-MINN/>