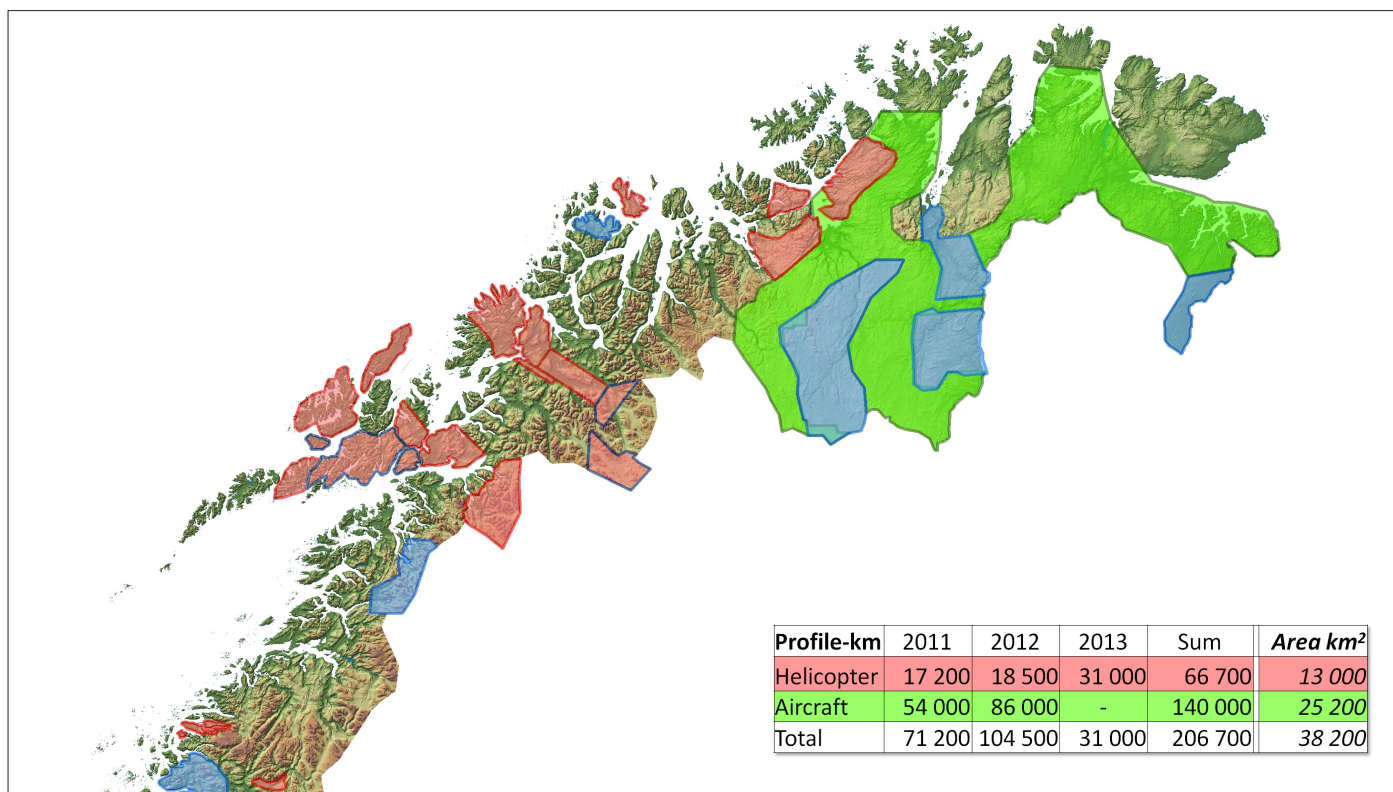


## MINN – Mineral resources In North Norway



Coverage for aircraft and helicopter surveys

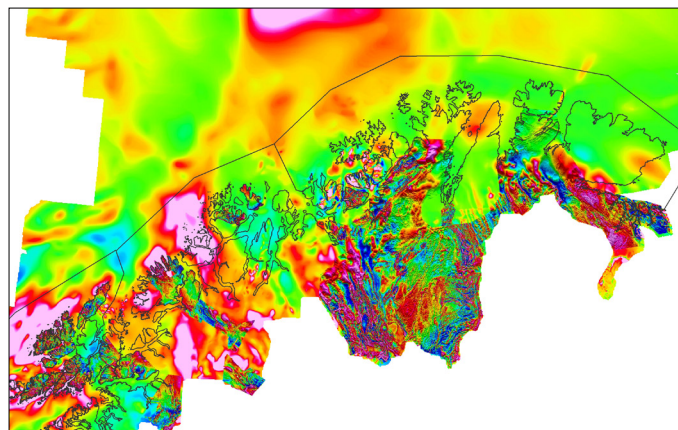
The Norwegian Government has allocated additional funds of NOK 25 million/year for the period 2011-2014 to the Geological Survey of Norway (NGU), to fund the programme “Mineral resources in North Norway” (MINN), which is aimed at improving coverage of basic geological information relevant to assessment of the mineral potential in the three northernmost counties.

The programme includes improved coverage of high-resolution geophysical data (magnetic, electromagnetic and radiometric) and ground follow-up in N Norway. A total of ca.13,000 km<sup>2</sup> was covered by helicopter-borne geophysics in 2011-13, including the following areas; Rana, Holandsfjord, Rombak, Austvågøya, Langøya, Kvæfjord, Evenes, Mauken, Finnsnes, Senja, Vannøya, Øksfjord, Alta-Kvænangen and Repparfjord. An additional 25,000 km<sup>2</sup> in Finnmark county (the northernmost) was covered by fixed-wing surveys. Gravity (FTG) and seismic surveys have been conducted in prospective areas. Processed data are released free of charge on the NGU website as they become available.

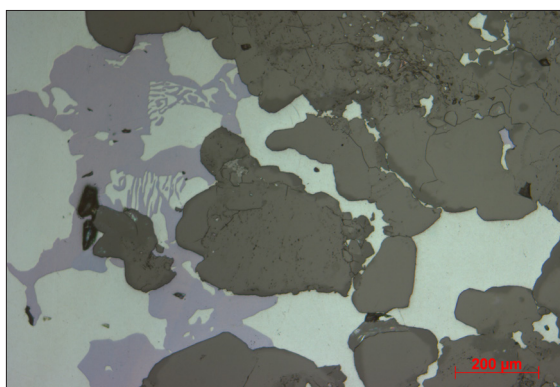
The results of geochemical re-analyses of 2,200 till samples from the whole of northern Norway initiated follow-up

sampling programmes in the Nordkinn and Tysfjord areas, which showed anomalous values of REE and various other special metals, and in Hattfjelldal which showed anomalous values of base metals.

Geological investigations are being carried out in key metallogenic areas with high potentials for orogenic gold, sedimentary copper and iron and magmatic nickel-copper-PGE and iron-titanium-vanadium.



Magnetic data



## NORWEGIAN GOVERNMENT POLICY:

### • New mineral act came into force on 1st January 2010

Easier applications, larger areas, lower fees for the first years.

### • New National Mineral Strategy

In 2013 the Norwegian government launched a new mineral strategy aiming at higher predictability and effective public management during planning processes and extraction.

### • Additional funding for mineral investigations in Norway

Increased coverage of regional geophysical and geochemical data and ground follow-up. The Geological Survey of Norway is currently in year four of a four-year programme in North Norway (MINN) and in the second year of a six-year programme in South Norway (MINS).

### • Nordic and international cooperation

Several initiatives towards the establishment of a cooperative mineral research network in the Nordic region have strong political backing. Compilation of mineral resource data for the Circum-Arctic region has also received governmental support.

## MINN

Mineral resources  
In North Norway

### In brief:

- NOK 25 mill./year (>4 mill. US year)
- High-resolution geophysics
- Follow-up geology
- Till geochemistry
- Spin-off projects (universities, NRC, industry)

### Goals:

- Higher exploration activity
- New discoveries
- Improved geological knowledge-base
- Mineral potential evaluation



## NGU

P.O.Box 6315 Sluppen  
N-7491 Trondheim  
Norway

### Visiting address:

Leiv Eirikssons veg 39  
tlf: +47 73 90 40 00  
ngu@ngu.no

### CONTACT AT NGU:

**Jan Sverre Sandstad**  
jan.sandstad@ngu.no  
tel: +47 73 90 42 08  
cell: +47 99 09 17 46

[www.ngu.no](http://www.ngu.no)

**The results from the MINN-programme can be downloaded from:**

<http://www.ngu.no/no/tm/Om-NGU/Prosjekter/Mineralressurser-i-Nord-Norge-MINN/>