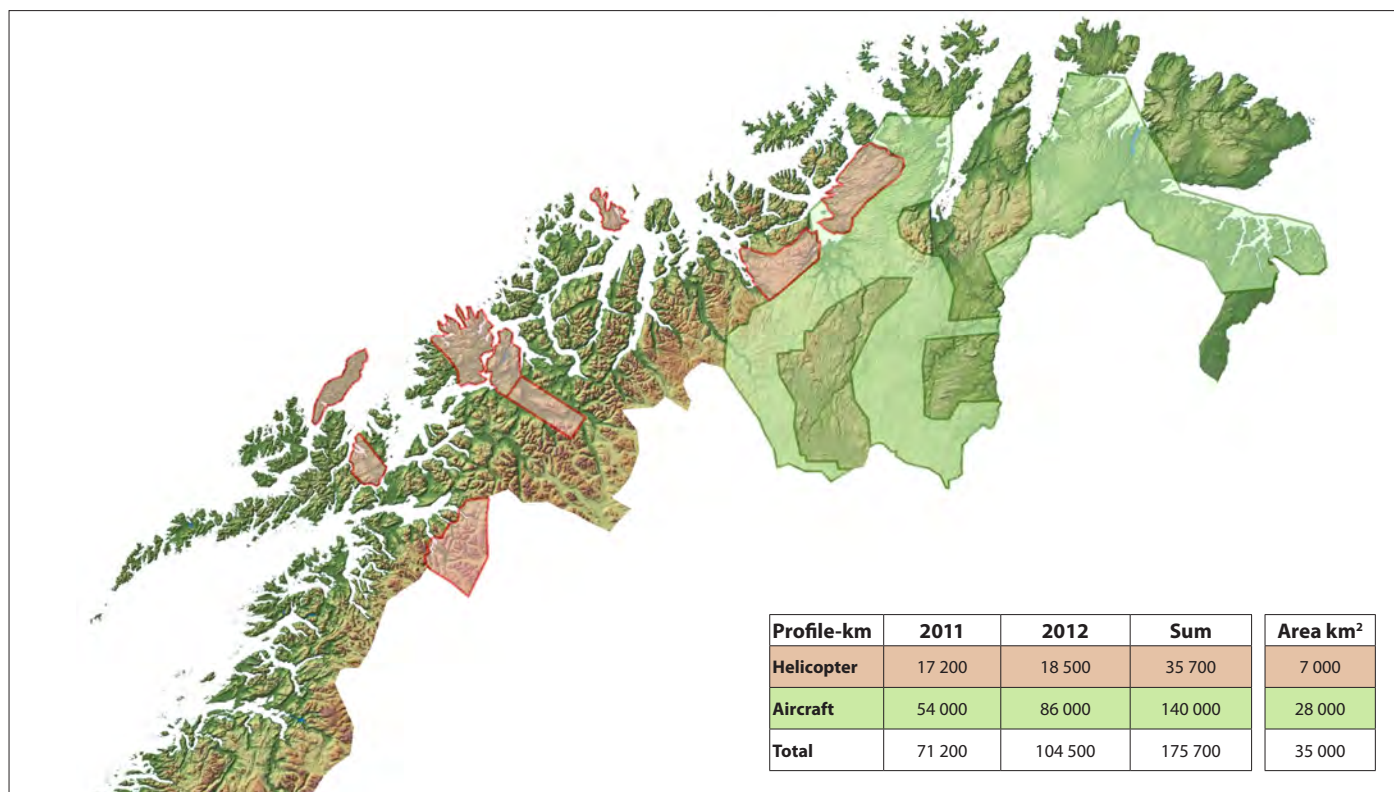




## MINN – Mineral resources In North Norway



Coverage for aircraft and helicopter surveys

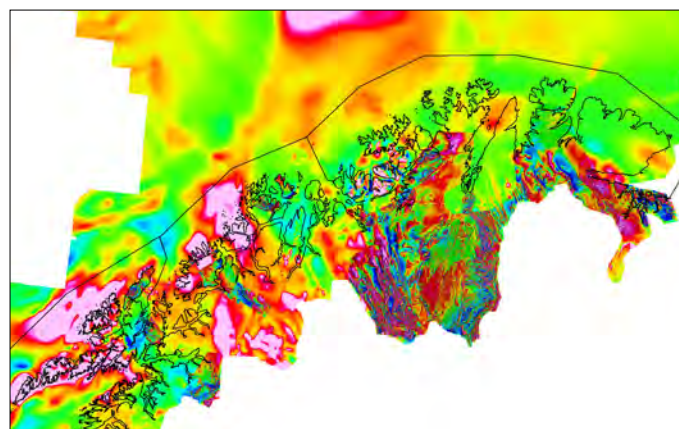
The Norwegian Government has allocated additional funds of NOK 25 mill./year for the period 2011-2014 to the Geological Survey of Norway (NGU) and the programme Mineral resources in North Norway (MINN) to improve coverage of basic geological information relevant to assessment of the mineral potential in the three northernmost counties.

The programme includes improved coverage of high-resolution geophysical data (magnetic, electromagnetic and radiometric) and ground follow-up in N Norway. Around 7,000 km<sup>2</sup> was covered in 2011-12 by helicopter-borne geophysics; Rana, Rombak, Kvæfjord, Mauken, Finnsnes, Senja, Vannøya, Alta-Kvænangen and Repparfjord. Additionally, 28,000 km<sup>2</sup> in Finnmark was covered by fixed-wing surveys. Gravity (FTG) and seismic surveys have been conducted in prospective areas. Processed data is released free of charge on the NGU website as they become available.

The results of geochemical re-analyses of 2,200 till

samples from whole northern Norway initiated follow-up sampling programmes at Nordkinn and Tysfjord – areas with anomalous values of REE and various other special metals.

Geological investigations are being carried out in key metallogenic areas with high potential for orogenic gold, sedimentary copper and iron, magmatic nickel-copper-PGE and iron-titanium-vanadium.



Magnetic data



Photo: Morten Eriksen

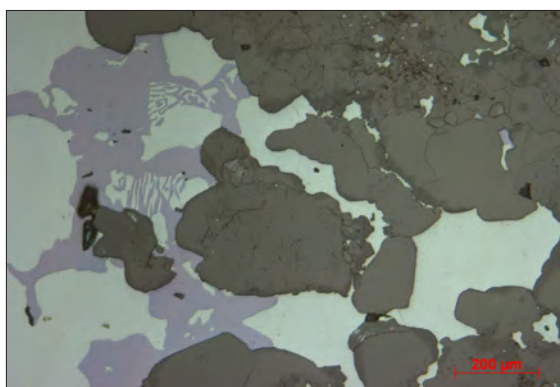


Photo: Malin Waage

## NORWEGIAN GOVERNMENT POLICY:

- **New mineral act came into force on January 1st 2010**

Easier applications, larger areas, lower fees for the first years.

- **New National Mineral Strategy**

The Norwegian government is launching a new mineral strategy aiming at high predictability and effective public management during planning and extraction.

- **Additional funding for mineral investigations in Norway**

Increased coverage of regional geophysical and geochemical data and ground follow-up. The Geological Survey is currently half way through a four-year programme in North Norway (MINN) and is currently starting up a new six-year programme in South Norway (MINS).

- **Nordic and international cooperation**

Several initiatives towards establishment of a cooperative mineral research network in the Nordic region have strong political backing. Compilation of mineral resource data for the Circum-Arctic region also has governmental support.

### MINN

Mineral resources In North Norway

#### In brief:

- NOK 25 mill./year (>4 mill. USD/year)
- High-resolution geophysics
- Follow-up geology
- Till geochemistry
- Spin-off projects (universities, NRC, industry)

#### Goals:

- Higher exploration activity
- New discoveries
- Improved geological knowledge-base
- Mineral potential evaluation
- Improved areal planning



### NGU

P.O.Box 6315 Sluppen  
N-7491 Trondheim  
Norway

#### Visiting address:

Leiv Eirikssons veg 39  
tlf: +47 73 90 40 00  
ngu@ngu.no

#### CONTACT AT NGU:

**Jan Sverre Sandstad**  
jan.sandstad@ngu.no  
tel: +47 73 90 42 08  
cell: +47 99 09 17 46

[www.ngu.no](http://www.ngu.no)

**The results from the MINN-programme can be downloaded from:**

<http://www.ngu.no/no/tm/Om-NGU/Prosjekter/Mineralressurser-i-Nord-Norge-MINN/>