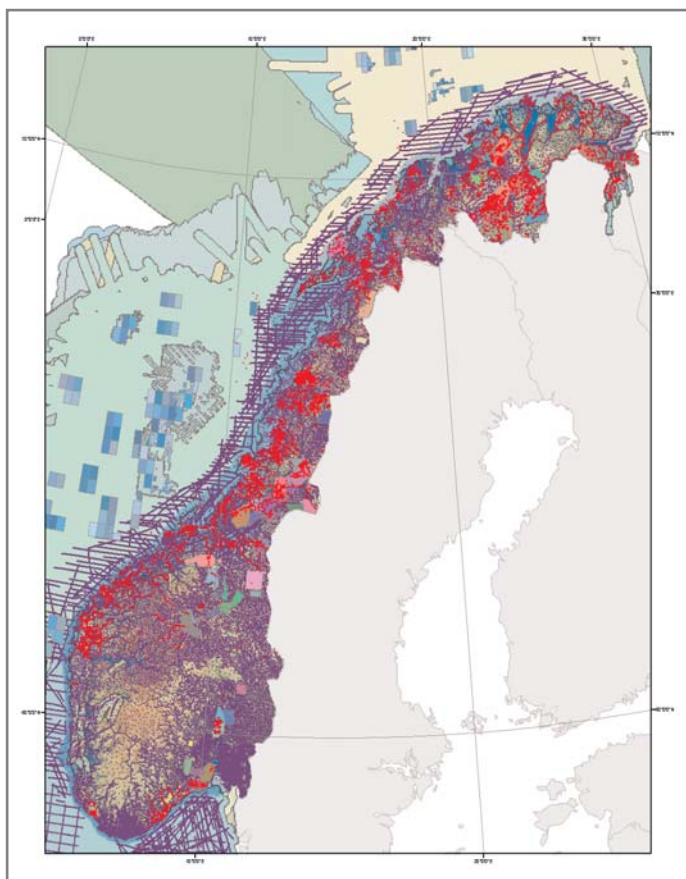


DIRECT ACCESS TO GEOPHYSICS ON THE NET



Outlines of some of the geophysical data sets in the national database at the Geological Survey of Norway.

Offered by the Geological Survey of Norway's DRAGON project

The Geological Survey of Norway manages national and international databases of a wide variety of geophysical data types and make them freely available to the earth science community via the DRAGON web site at:

www.ngu.no/dragon

The web site is intended for:

- Geophysicists and geologists working in the hydrocarbon and mineral exploration industries
- Earth scientists and engineers working with fresh water supply, pollution, engineering projects, geothermal energy and slope stability
- University researchers in the earth sciences, national and international.

Online interactive map databases:

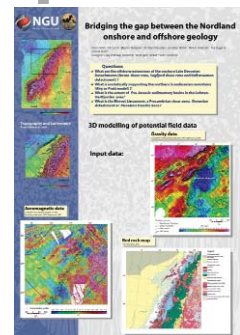
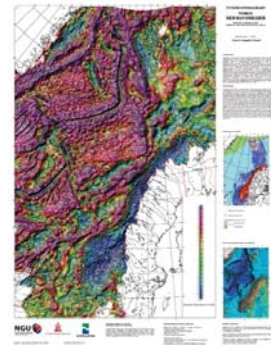
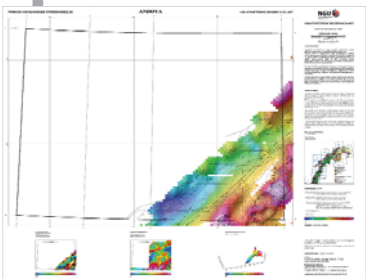
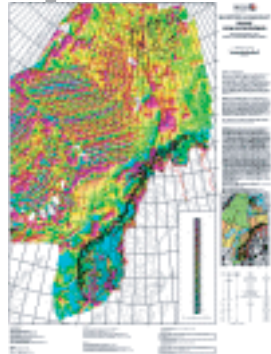
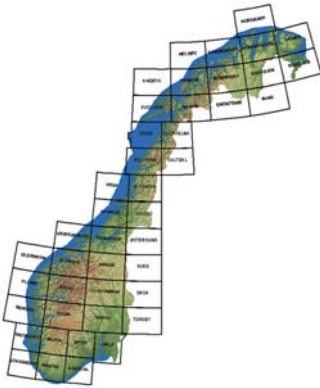
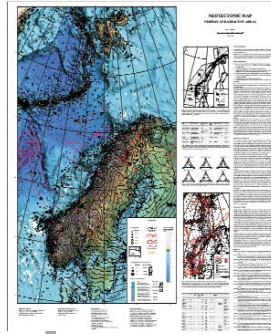
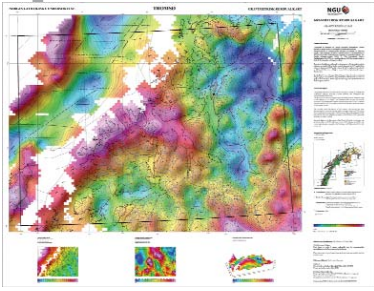
- Regional scale aero-magnetic and marine gravity surveys over Norway and the Norwegian continental shelf
- Regional scale helicopter-borne geophysical surveys
- Land and near-shore gravity measurements
- Petrophysical measurements (magnetic susceptibility, remanence intensity and direction and density)
- Ground geophysical surveys
- IAGA Global Palaeomagnetic Database

We also offer free viewing and download of digital:

- Geophysical maps
- Scientific reports
- Brochures
- Posters

Contact us:

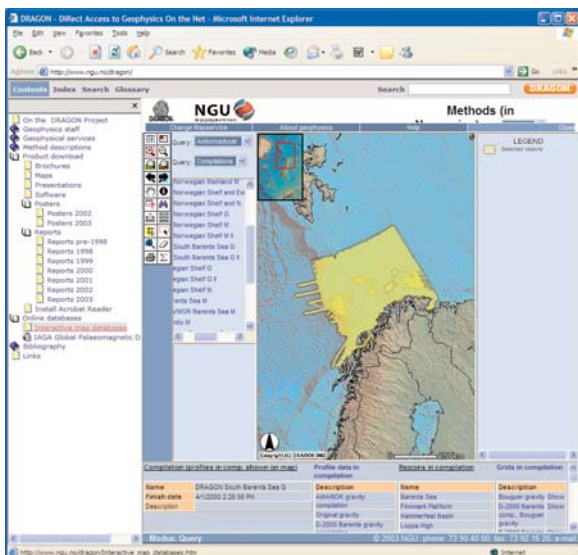
DRAGON project leader
 Torleif Lauritsen
 Geological Survey of Norway
 Mailing address: 7491 Trondheim
 Street address: Leiv Eirikssons vei 39,
 Trondheim
 Tel. +47 73 90 44 62
 Fax. +47 73 90 44 94
 Email torleif.lauritsen@ngu.no



Gravity and aeromagnetic maps 1:250,000

Theme maps

Posters



One of the interactive map databases in use at the website.



The Geological Survey of Norway's DRAGON project provides direct access to geophysical data, interactive map databases, digital maps and other geophysics products at web address WWW.NGU.NO/DRAGON.