



©Photo David Fisk

FIRST CIRCULAR

GeoHab 2007

Marine Benthic Habitats of the Pacific and Other Oceans: Status, Use, and Management

An International Conference

**Hosted by the Government of New Caledonia,
in conjunction with**

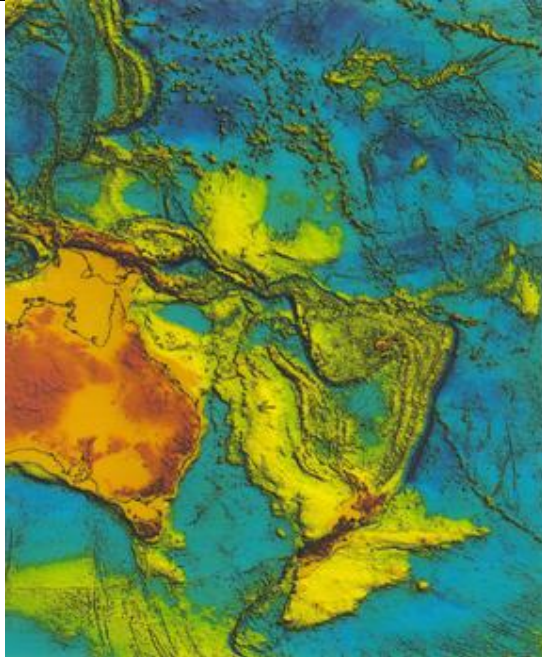
The Circum Pacific Council and the South Pacific Applied Geoscience Commission

2-6 May 2007, Institute for Research & Development (IRD)

Noumea, New Caledonia

A major international conference addressing advancement in the knowledge, mapping, and resource management of the World's oceans will convene in Noumea, New Caledonia, 2-6 May 2007, as part of the GeoHab Annual Meeting. The intent of the forum is to share the latest scientific and technical information about the seafloor and associated communities, with a particular emphasis on the Pacific Ocean region; and to review progress in the areas of mapping/modeling and management since the first Marine Benthic Habitat Mapping conference Noumea in 1997.

In the past ten years tremendous advancements have been made in seafloor mapping technologies, methodologies, and information presentation to support a wide range of management applications. This conference will bring together participants from a growing field of scientific experts, managers, economists, and policy makers involved in living and non-living resources appraisal and management.



Conference Themes

- * **Technology and Data Processing** - includes both acoustical and optical, deep-water and shallow-water, and geophysical and biological instrumentation.
- * **Mapping Techniques and Classification Schemes** - methodologies in characterizing marine benthic habitats, auto-classification techniques, (supervised and unsupervised), and case histories, that identify surrogates or proxies for assessing the condition of habitats and biological communities.
- * **Management / Policy** - the "science-use-management" link
- * **Coral Reef and Seagrass Habitats** - current and emerging problems and latest techniques in habitat mapping and characterizations and status assessment.
- * **The Time Dimension** - pressures driving habitat change, including physical, chemical and biological processes, and monitoring.

Map © Geoscience Australia

While the focus of [GeoHab 2007](#) will be on marine benthic habitat characterization and mapping, the thematic areas will be inclusive and address topics on natural resource economics, marine geohazards characterization and assessment, and stakeholder engagement.

Sponsors include; the International Oceanographic Commission, the Secretariat of the Pacific Community, Secretariat of the Pacific Regional Environment Programme, the New Zealand's NIWA and GNS Science. **If your organization is interested in being a sponsor please contact H. Gary Greene (greene@mlml.calstate.edu).**

Registration Fee

The registration fee is US\$250 which covers the delegate rate for the 3 days of the conference. A reduced registration fee of US\$100 is available for students.

Please note that there is a maximum of 250 delegate places at the GeoHab 2007 conference, so please register early to avoid disappointment.

Registration Form and Abstracts

Deadline for registration is 28th February 2007, to be sent to Mary@sopac.org. Registration Form available at www.sopac.org

Deadline for submission of abstracts is January 31st 2007, to be sent to Vaughn Berrie (GEOHAB@nrcan.gc.ca)

Please direct any enquiries to Yves LaFoy (yves.lafoy@gouv.nc) or Mary Power (Mary@sopac.org) including 'GeoHab' in the subject field

Exhibitors:

Technical Exhibitors are welcome: Companies and organizations intending to exhibit should contact Ed Saade (ESaade@fugro.com).

Organizing Committee:

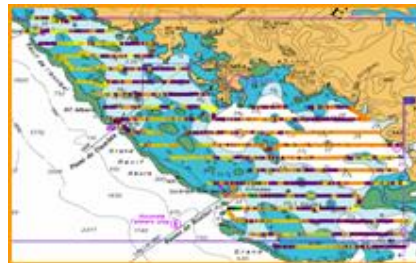
Yves Lafoy (yves.lafoy@gouv.nc)
 Fabrice Colin (Dir.Noumea@noumea.ird.nc)
 Victor David (vdavid@congres.nc)
 Mary Power (mary@sopac.org)
 Vaughn Barrie (VBarrie@NRCan.gc.ca)
 H. Gary Greene (greeneg@mlml.calstate.edu)
 Adrien Rivaton (arivaton@offratel.nc)
 Elisabeth Gremont (coopreg@gouv.nc)
 Jean-Claude Angué (jean-claude.anguie@nouvelle-caledonie.gouv.fr)
 Bernard Cerneaux (bernard.cerneaux@gouv.nc)
 Laurence Morini (laurence.morini@gouv.nc)
 Vainuupo Jungblut (vainuupoj@sprep.org)
 Ian Wright (i.wright@niwa.co.nz)

Scientific Committee:

Yves Lafoy (yves.lafoy@gouv.nc)
 Michael Allenbach (allenbac@univ-nc.nc)
 Claude Chauvet (Robert@sopac.org)
 Robert Smith (Robert@sopac.org)
 Jens Kruger (jkuger@sopac.org)
 Arthur Webb (Arthur@sopac.org)
 Tim Adams (ValerieA@spc.int)
 Serge Andrefouet (serge.andrefouet@noumea.ird.nc)
 Christophe Chevillon (christophe.chevillon@ird.nc)
 Bernard Pelletier (Bernard.pelletier@noumea.ird.nc)
 Robin Falconer (r.falconer@gns.cri.nz)
 Alan Butler (alan.butler@csiro.org)

Venue:

**IRD Center
 Anse Vata
 BP A5 98848 Nouméa Cedex
 New Caledonia**



© IRD, Chevillon C. (programme ZoNéCo).

This conference promises to attract many scientific researchers, technical experts and managers involved in fisheries, living and non-living resources assessment, and marine benthic habitat mapping. Come and join your colleagues and make new friends in Noumea. Information regarding travel and lodging is provided below:

Accommodation is by own arrangement. The following hotels are recommended Indicative 2006 Rates (to be updated):

HOTEL LE LAGON

148, route de l'Anse Vata, Noumea
 Tel: (687) 26 12 55 / Fax: (687) 26 12 44
 Studio (1 to 2 persons) XPF 6,000 incl. tax
 1 Bedroom Apartment (1 / 3 pers) XPF 8,000 incl. tax
 Continental breakfast XPF 800
 American breakfast XPF 1,500

HOTEL LE MERIDIEN

7, promenade Pierre Vernier, Anse Vata, Noumea
 Tel: (687) 26 50 00 / Fax: (687) 26 50 03
 Garden View Room XPF 18,000+ XPF 1,000 tax
 Ocean View Room XPF 21,000+ XPF 1,000 tax
 Corporate Room XPF 23,000+ XPF 1,000 tax
 Junior suite XPF 42,000+ XPF 1,000 tax
 Breakfast + XPF 200

Climate: Tropical, more or less temperate

Airlines serving New Caledonia**✦ From Europe:**

Air France (AF) / Qantas (QF)
 Air New Zealand (NZ)
 KLM via Osaka ou Tokyo + Air Calin (KL)
 Singapore Airlines via Sydney/Brisbane or Auckland + Air Calin (SQ)
 Cathay Pacific via Sydney/Brisbane or Auckland + Air Calin (CX)
 Emirates via Sydney/Brisbane + Qantas (EK)

✦ From Canada and US:

Qantas
 American Airlines via Sydney or Brisbane + Qantas
 United Airlines via Sydney or Brisbane + Qantas
 Air New Zealand via Auckland or Nandi + Air Calin
 Air Tahiti Nui via Papeete + Air Calin (TN)
 Northwest via Tokyo + Air Calin (NW)
 Japan Airlines via Tokyo or Osaka+ Air Calin (JL)

HOTEL NOUVATA PARK ROYAL

123 promenade Roger Laroque, Anse Vata, Noumea
Hotel Pacifique 2 Stars
Pool View Room XPF 6,900+ XPF 350 tax per night
Ocean View Room XPF 7,900+ XPF 350 tax
3 Star Hotel
Pool/Ocean View Room XPF 9,800 incl. tax

Hotel Le Park 4 Stars

Pool/Ocean View Room XPF 12,400 incl. tax
Garden View Room XPF 13,900 incl. tax
Continental breakfast XPF 1,872
American breakfast XPF 2,392

RAMADA HOTEL

7 rue Louis Bleriot, Anse Vata, Noumea
Superior Room XPF 13,900 incl. tax
Deluxe Room XPF 16,900 incl. tax
Junior suite (with Kitchen) XPF 18,900 incl. tax
Deluxe suite (ocean view) 4 persons XPF 20,900 incl. tax
(1 double bed + 2 beds + sofa with kitchen)
Executive suite (ocean view) 6 persons XPF 26,900
incl. tax (1 double bed + 2 beds + sofa with kitchen)
Continental breakfast XPF 1,800
American breakfast XPF 2,200

From Asia:

Qantas
Singapore Airlines, Cathay Pacific & Malaysia Airlines
(MH) to Sydney, Brisbane or Auckland + Air Calin or
Qantas

Transport Options from airport:

Shuttles and Taxis available from Tontouta Airport
(about 50 km North of the Capital Nouméa) at 2006
rates of 3,000 X PF and about 10,000 X PF, respectively

Currency: Pacific Franc (CFP / X PF)
1 US \$ approx. 100 X PF

